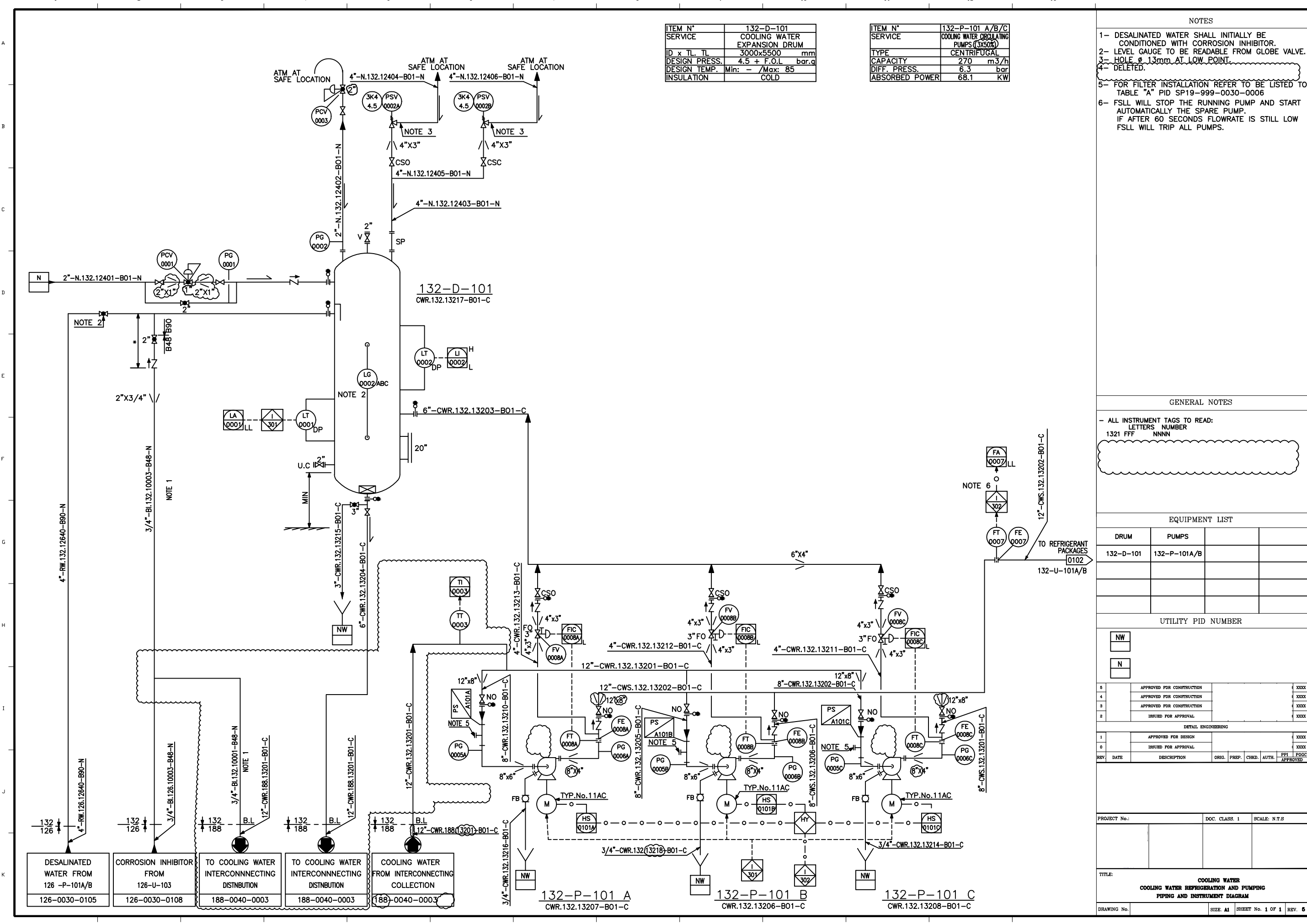


ITEM N°	132-D-101
SERVICE	COOLING WATER EXPANSION DRUM
ID x TL, TL	3000x5500 mm
DESIGN PRESS.	4.5 + F.O.L bar.g
DESIGN TEMP.	Min: - /Max: 85
INSULATION	COLD

ITEM N°	132-P-101 A/B/C
SERVICE	COOLING WATER CIRCULATING PUMPS (3x50%)
TYPE	CENTRIFUGAL
CAPACITY	270 m ³ /h
DIFF. PRESS.	6.3 bar
ABSORBED POWER	68.1 KW

- NOTES
- DESALINATED WATER SHALL INITIALLY BE CONDITIONED WITH CORROSION INHIBITOR.
 - LEVEL GAUGE TO BE READABLE FROM GLOBE VALVE.
 - HOLE Ø 13mm AT LOW POINT.
 - DELETED.
 - FOR FILTER INSTALLATION REFER TO BE LISTED TO TABLE "A" PID SP19-999-0030-0006
 - FSSL WILL STOP THE RUNNING PUMP AND START AUTOMATICALLY THE SPARE PUMP. IF AFTER 60 SECONDS FLOWRATE IS STILL LOW FSSL WILL TRIP ALL PUMPS.



GENERAL NOTES

- ALL INSTRUMENT TAGS TO READ:
LETTERS NUMBER
1321 FFF NNNN

EQUIPMENT LIST

DRUM	PUMPS		
132-D-101	132-P-101A/B		

UTILITY PID NUMBER

NW
N

5	APPROVED FOR CONSTRUCTION	XXXX
4	APPROVED FOR CONSTRUCTION	XXXX
3	APPROVED FOR CONSTRUCTION	XXXX
2	ISSUED FOR APPROVAL	XXXX

DETAIL ENGINEERING

1	APPROVED FOR DESIGN	XXXX
0	ISSUED FOR APPROVAL	XXXX

REV.	DATE	DESCRIPTION	ORIG.	PREP.	CHKD.	AUTH.	PFI	POGC	APPROVED

PROJECT No.:	DOC. CLASS. 1	SCALE: N.T.S
--------------	---------------	--------------

TITLE: **COOLING WATER REFRIGERATION AND PUMPING PIPING AND INSTRUMENT DIAGRAM**

DESALINATED WATER FROM 126-P-101A/B	CORROSION INHIBITOR FROM 126-U-103	TO COOLING WATER INTERCONNECTING DISTRIBUTION	TO COOLING WATER INTERCONNECTING DISTRIBUTION	COOLING WATER FROM INTERCONNECTING COLLECTION
126-0030-0105	126-0030-0108	188-0040-0003	188-0040-0003	188-0040-0003

132-P-101 A CWR.132.13207-B01-C
 132-P-101 B CWR.132.13206-B01-C
 132-P-101 C CWR.132.13208-B01-C