

0380-VA-007
GLYCOL SUMP

DESIGN PRESSURE = 5 barg/FV
DESIGN TEMPERATURE = 205 °C
INT. DIAMETER = 3000 mm NOTE 7
LENGTH (TL/TL) = 9000 mm NOTE 7
MATERIAL = CS+3mmCA+INTERNAL EPOXY LINING

0380-PA-001 A/B
GLYCOL SUMP PUMPS

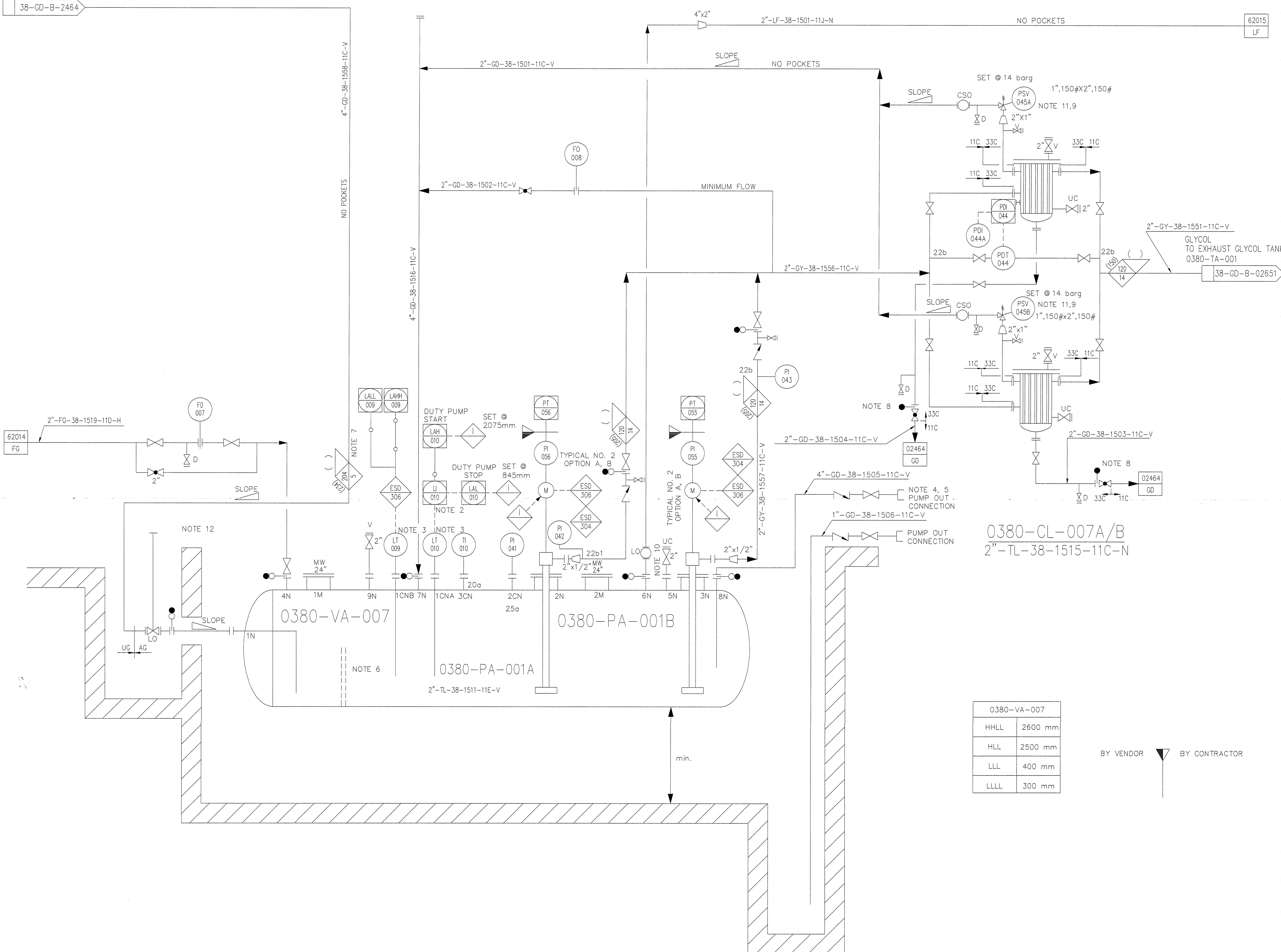
RATED FLOWRATE = 10 m³/h
RATED DIFF. PRESSURE = 4.1 bar
ABSORBED POWER = 2 KW
MATERIAL : CASING = SS (N)
IMPELLER = SS (N)

0380-CL-007 A/B
GLYCOL DRAIN CARTRIDGE FILTERS

DESIGN PRESSURE = 14 barg/FV
DESIGN TEMPERATURE = 150 °C
INT. DIAMETER = (NOTE 13) mm
LENGTH (TL/TL) = (NOTE 13) mm
MATERIAL = CS(N+HIC)+SS CLADDING

FROM GLYCOL DRAIN DISTRIBUTION

38-GD-B-2464



Notes

- ALL INSTRUMENT TAG NUMBERS ON THIS DRAWING ARE PREFIXED BY 0-0380.
- GLYCOL SUMP PUMPS OPERATE UNDER ON/OFF CONTROL BETWEEN HIGH LIQUID LEVEL AND LOW LIQUID LEVEL.
- TOP MOUNTED LEVEL INSTRUMENT.
- GLYCOL SUMP UNLOADING CONNECTION.
- PROVIDE TRUCK LOADING AREA.
- DOUBLE PERFORATED PLATE.
- SYSTEM OPERATES NORMALLY WITH NO FLOW AND AMB TEMPERATURE. DRAIN SYSTEM COULD HAVE PEAK FLOW TEMPERATURE OF 204°C.
- SPECTACLE BLIND SHALL NOT BE INSTALLED, BUT USED ONLY FOR MAINTENANCE (FOR DETAILS SEE GENERAL NOTE N° 37).
- PRESSURE SAFETY VALVES SUPPLIES BY GLYCOL DRAIN CARTRIDGE FILTERS VENDOR.
- PROVIDED INTERLOCK PROCEDURE SO THAT VALVE ON GAS OUTLET LINE TO BE ONLY OPENED BEFORE OPENING ALL INLET VALVES AND ONLY CLOSED AFTER CLOSING ALL INLET VALVES.
- PSV TO BE PROVIDED BY FILTERS VENDOR.
- VALVE OPERABLE FROM GRADE.
- REFER TO DOCUMENT NUMBER 38-RC-D-98502

Reference Drawings	No.
GENERAL NOTES	

EQUIPMENT LIST	
0380-PA-001 A/B	GLYCOL SUMP PUMPS
0380-CL-007 A/B	GLYCOL DRAIN CARTRIDGE FILTER
0380-VA-007	GLYCOL SUMP

Rev.	Date	Description
9	15 JAN 10	ISSUED FOR CONSTRUCTION
8F	10 DEC 08	ISSUED FOR CONSTRUCTION (REVISED WHERE INDICATED)
7	15 JUL 07	ISSUED FOR CONSTRUCTION
6	9 MAY 07	ISSUED FOR DESIGN
5	6 AUG 06	HAZOP IMPLEMENT
4	14 NOV 05	ISSUED FOR DESIGN
3	JULY 05	ISSUED FOR DESIGN
2	APR. 05	ISSUED FOR DESIGN
1	Oct. 04	ISSUED FOR FEED
0	15 JULY 04	ISSUED FOR DESIGN

Contractor: _____ Plant: _____ Consultant: _____

Title: **PIPING AND INSTRUMENTATION DIAGRAM
GLYCOL SUMP SYSTEM (TRAINS 1,2 & 3)**

Scale	Drawing No.	Sheet No.	Rev.
		1/1	9